

GENERAL PROFILE



www.aimsinternational.net
info@aimsinternational.net
00966138670001

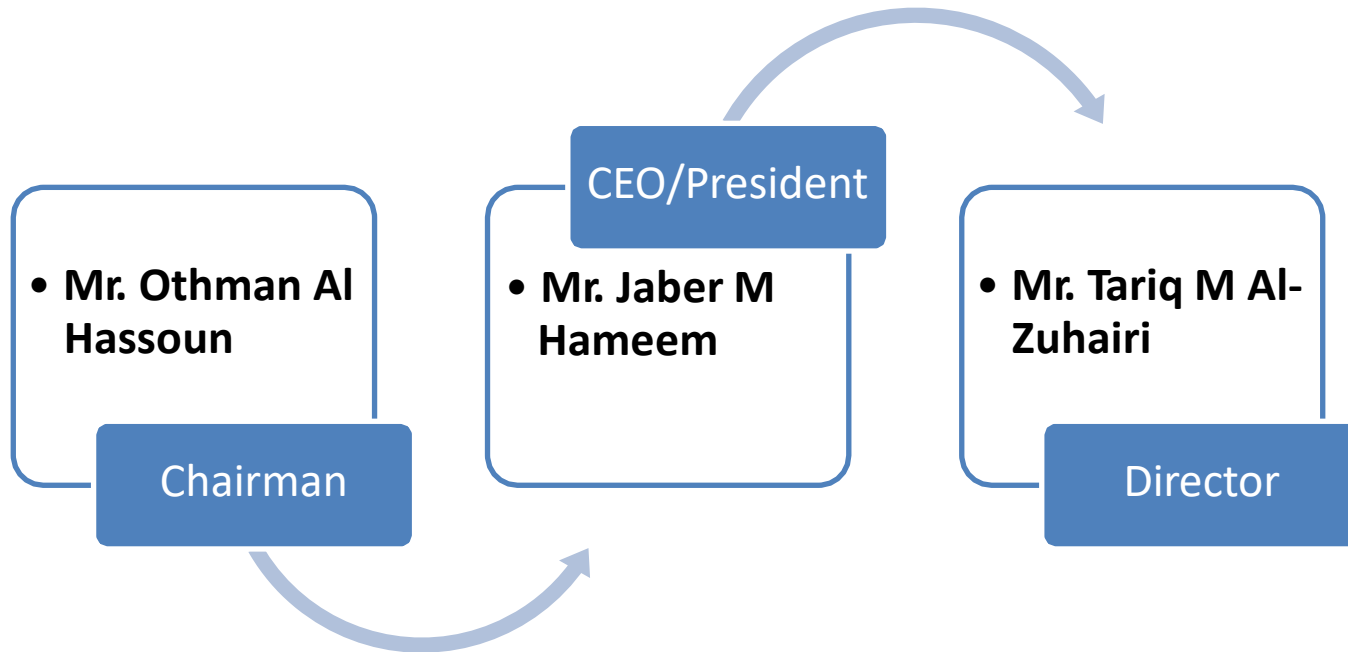


Introduction

Aims International (AIMS)

- From humble beginnings around 20 years ago, The Aims International Company Limited was built on the principles of hard work, integrity and a strong desire to succeed – values which remain with us today. Throughout this era, our transportation industry endured many changes that saw the industry evolve towards greener operation methods and tighter legislations; all changes that drove businesses to adapt. We at AIMS INTERNATIONAL, found ways to embrace these changes while providing our customers with a first class service. Our values together with our vision helped us to confidently navigate through many changes that made us what we are today.

Board Of Directors





Mission, Vision, Our Values

Mission

Achieving advanced positions in the field of improving our investment choices. Creating innovation and innovation is our main concern in the hope of winning the trust of our clients and achieving our strategic goals.

Vision

To be the leading and premiere logistics & Trucking Service provider in the Kingdom of Saudi Arabia.

Values

AIMS deems importance of values,

- Concentration on the process
- Actions Execution
- Know your Priorities
- Communication Coordination
- Optimization
- Learn

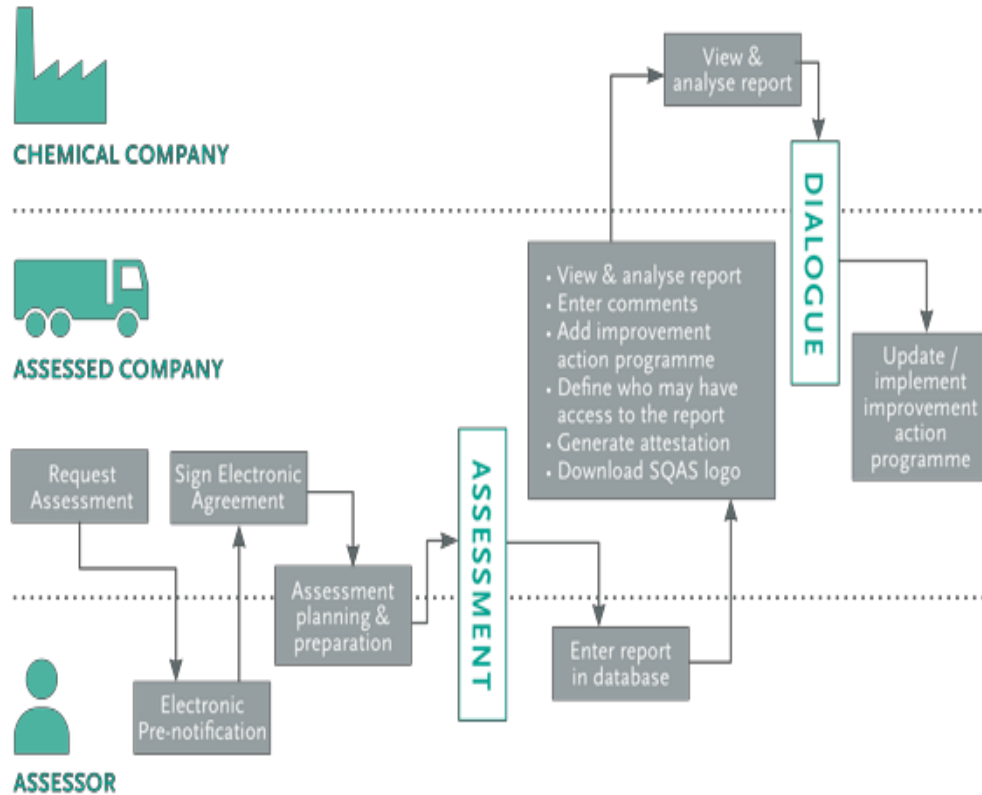


President's Message

- To take a leading position in the forefront of the region's companies and provide comprehensive integrated logistical services that meets the expectations of our customers.



QSHE First..!!



- Gulf Sustainability & Quality Assessment System.
- A system to evaluate the quality, safety, security and environmental performance of Logistics Service Providers in a uniform manner by single standardized assessments carried out by independent assessors using a standard questionnaire.



BUSINESS FIT

- We believe that a strong business fit exists, a business fit built upon common cultural values, existing operations and our business approach.
- If a Client selects Aims its partner of choice in Saudi Arabia, one can be assured that you have a partner that is willing to work in complete transparency and with a commitment to create value for your business through improved service to customers.
- We are convinced that we share similar values, and we will not compromise these – our culture is based upon safety, engagement with our employees and compliance



COMMITMENT TO HEALTH AND SAFETY

- Aims H&S philosophy is based upon the development and implementation of a positive safety culture coupled with the belief that the subsequent breakthrough in safety performance can only be achieved through the support and drive from all levels of employee. Aims achieves the desired culture by employing Behavioral Based Safety techniques. These are centered on 4 disciplines: **Mindset, Situation Awareness, Safety Engagement, Performance Review.**
- Mindset involves adopting a Safety-First culture throughout the business and under clear leadership. Situation Awareness training ensures that the employees can identify and manage hazards that they encounter when at work to avoid injury to either themselves or their colleagues.
- Safety Engagement is a vital component of the program and involves direct contact with the employees through safety conversations. This aspect of the program engages with the employees to agree compliance with safety rules and standards and is an effective proactive tool.
- The final aspect is the Performance Review. Measuring your progress is essential in assessing where you are on the safety journey while maintaining the momentum and initiative.
- Aims maintains relationships for networking & sharing of HSE best practices with Chemical and Energy sector customers. Being a logistics company provides us with the depth of knowledge to provide the highest levels of HSE. Aim's intent is to apply this same approach to HSE management for SABIC operations.



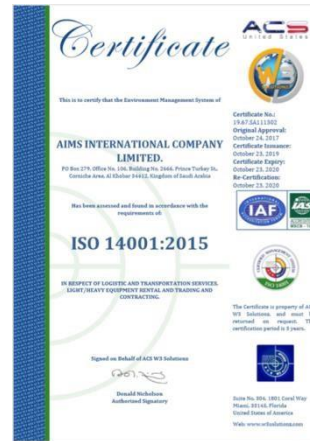
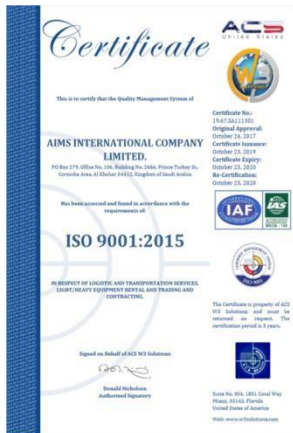
Safety First..!!



- Our Drivers and Operations Staff are certified and fully trained on:
 - DDC
 - HAZMAT
 - HAZ-COM
 - ERP “Emergency Response Procedure”
 - PTI “Pre-Trip-Inspection
 - First Aid
 - Load Securement

Quality Management

- QMS was introduced in early 2017 in the form of ISO-9001, OHSAS-18001, ISO-14001 certifications which tailored Aims to improve performance at a Logistics and Trucking/Transportation.





What We Do..



- we offer fully digital and “Safe” GSQAS focused Logistical/Transportations operations management services that allows full control and traceability in receiving, storing and transporting from shippers to consignees kingdom wide and in GCC overland, we do storing, stripping, re-stuffing of containers and exporting Liquid, Solids from JCP, Dammam and Jeddah Islamic port.

Appreciations and Awards 2021

مبادراتهم في توفير ترتيبات تركيب وإزالة كراسي التحميل الداخلية لدعم المرونة في التبديل بين شحنات المنتجات الطويلة والمسطحة في موقع جديد
 PROVIDING IN-HOUSE SADDLE INSTALLATION/REMOVAL ARRANGEMENT SUPPORTING AGILITY IN SWITCHING BETWEEN LONG & FLAT PRODUCT SHIPMENTS AT HADEED



شركة ايمز انترناشيونال
 AIMS INTERNATIONAL CO.

مبادراتهم في الامتثال بنسبة 100% للتحاير الاحترازية لكوفيد 19 بناء على التقييم

100% COMPLIANCE TO COVID-19 PRECAUTIONARY MEASURES DURING THIRD PARTY ASSESSMENT ASSIGNED BY SABIC



شركة ايمز انترناشيونال
 AIMS INTERNATIONAL CO.

- The Supply Chain Management Division of Saudi Iron & Steel Company(Hadeed) Organized and Event with its partners (Transporters) to honor their Initiatives and appreciate their performance for the year 2020-2021
- Initiative Award are special awards that were given for the initiatives that supported Hadeed Business in the fields of EHSS improvement , Cost Saving , Quality Improvement , Situational Support among many others



Aims Core Activities



- Transportation
- Heavy Lifting
- Full Warehousing activities, inbound/outbound.
- Hazardous Cargo Storage and Handling.
- Temp Controlled Warehousing.
- Light and Heavy Equipment
- Remote Terminal Logistics
- Oil & Gas
- Training
- Joint Ventures “SMTC/AIMS” & “Britam Arabia/Aims”



Who We are..



20 Curtain Siders



60 Dyna



850 Drivers



800 Tractor Head



850 FB Trailers



10 Road Tanker



30 Fork Lifts



8 Ambulance



25 Low Beds



3 Mobile Crane



2 Reach Stacker



5 Boom Truck



Aims Locations



| | Yards-Location | Trucking -Transportation | Container Operations | ISO Tanks | Warehouse | Custom Clearance | Support Services |
|----------------|-----------------------|---|--|---|---|------------------------------------|--|
| Eastern Region | Abu Maan 110,000 SQM | Kingdom wide,GCC,MEZ FTL LTL Heavy Lifts ** ** | Storage LO/LO inbound shipment outbound shipment Stuffing De-Dstuffing | Storage LO/LO inbound shipment outbound shipment ** ** | Distribution Pre-arrangments Temp controlled Covered Storage Open Storage ** | Import Export ** ** ** | fully equipped inhouse maintenance workshop Parking Bays for 600 Truck & Trailers Residential Compound for workers ** ** ** |
| | Jubail | Kingdom wide,GCC,MEZ | ** | ** | ** | Export | ** |
| | Udhailiyah 10,000 SQM | Oil & Gas Sector | ** ** | ** ** | ** ** | ** ** | fully equipped inhouse maintenance workshop Parking Bays for 100 Truck & Trailers Residential Compound for workers |
| | Dammam 10,000 SQM | Kingdom wide,GCC,MEZ FTL LTL Heavy Lifts ** ** | Storage LO/LO inbound shipment outbound shipment Stuffing De-Dstuffing | Storage LO/LO inbound shipment outbound shipment ** ** | Distribution Pre-arrangments Temp controlled Covered Storage Open Storage ** | Import Export ** ** ** | ** ** ** ** ** |
| Western Region | Rabigh 10,000 SQM | Kingdom wide,GCC,MEZ FTL LTL Heavy Lifts ** ** | Storage LO/LO inbound shipment outbound shipment Stuffing De-Dstuffing | Storage LO/LO inbound shipment outbound shipment ** ** | Distribution Pre-arrangments Open Storage Covered Storage ** | Import Export ** ** ** | fully equipped inhouse maintenance workshop Parking Bays for 60 Truck & Trailers Residential Compound for workers ** ** ** |
| | Jeddah 10,000 SQM | Kingdom wide,GCC,MEZ FTL LTL Heavy Lifts ** ** | Storage LO/LO inbound shipment outbound shipment Stuffing De-Dstuffing | Storage LO/LO inbound shipment outbound shipment ** ** | Distribution Pre-arrangments Open Storage Covered Storage ** ** | Import Export ** ** ** | ** ** ** ** ** |



ADDED-VALUE SERVICES



- Container handling equipment (Containers Reach-stackers, top loaders...)
- Empty / laden container staging areas.
- Intermediate container storage.
- Container land transportation.
- Port shuttles (import/export).
- Import/Export clearance.
- FTL transportation to MEZ,GCC and kingdom wide.
- Custom clearance.



Container Freight Station

- Open/covered storage facilities.
- Door to Door Delivery.
- All the documentation support needed for the cargo export.
- Freight consolidation/deconsolidation between all transported legs.
- Container stuffing/de-stuffing.
- Container receiving in the port and preparing for shipment.
- cargo loading.
- Custom clearance at port of destination.
- Container/Freight delivery to the final destination.
- Pre Arrangements of Pallets with cleaning.





ADDED-VALUE SERVICES



- **In continuation to our core activities Aims offer the added-values services:**
- Open/covered storage facilities.
- Finished product handling.
- Cargo consolidation/deconsolidation. “Pre Arrangements with cleaning”.
- Labeling on Products.
- Container stuffing/de-stuffing.
- Dedicated mobilization, resources and staff.
- Supply chain solutions.





Full Track & Trace



- Fully Operational Control Room.
- All assets are equipped with GPS/Tracking Devices.
- Mix-Telematics main tracking source.
- Other GPS tracking source is “AFAQY” Aramco approved.
- Remote areas tracking VIA Iridium satellite specially for Oil & Gas Sector.
- Drivers carries Satellite phones for their safety and better tracking.
- Daily, Hourly customer Specific KPI's.
- Trucks are Equipped with Desert Survival KITS.





SUPPORT SERVICES



- Fully equipped technical workshop for all equipment.
- Mobile Workshop units for all equipment.
- Low Bed trailers.
- Residential Compounds for Mechanics and Technician.
- 24/7 Ambulance for workers residing at Aims “Owned” residential compound.
- Customer SOW Specific daily KPIs.



REFERENCES & ACCOUNTS

- We are expert in following main sectors and industries :
- Petrochemicals / Polymers (Solids).
- Chemicals (Liquids). DG “Hazardous”
- Heavy Lifting
- Oil & GAS.
- Steel.
- Import/Export.
- PLF